

RSEs AND RESOURCES AT EPCC

CERSE 31/05/23



A bit of history

- Established in 1990
 - Department of Physics at UoE used parallel computers for a number of research projects
 - QCD, Solid State Physics, ...
 - EPCC was established as an independent institute to:
 - Promote the use of parallel computers in academia and industry
 - To be self funded
 - Edinburgh Parallel Computing Centre – now just EPCC
- Originally based in the JCMB at the Kings Buildings
 - Moved to the Bayes Centre when the building first opened in 2018
 - Occupy most of the second floor at the Bayes
- For a long time EPCC was composed of around 40-50 individuals
 - Now have around 130 individuals
 - Have almost run out of space on the second floor



A good place to work ...

- A bright multi disciplinary (mostly) young set of people to work with
 - Aka a bunch of high powered geeks...
- A half-way house between industry and academia and industry
 - A little more regimented than an academic post but not as draconian as industry
- Some novel and big kit to play with (more on this later)
- Run MSc/PhDs
 - MSc in High Performance Computing (HPC) and HPC with Data Science
 - Always looking for interesting MSc projects
- Mostly project based work
 - Challenge and extend your skill set
- Software Sustainability Institute (SSI) based at EPCC (more on this later)



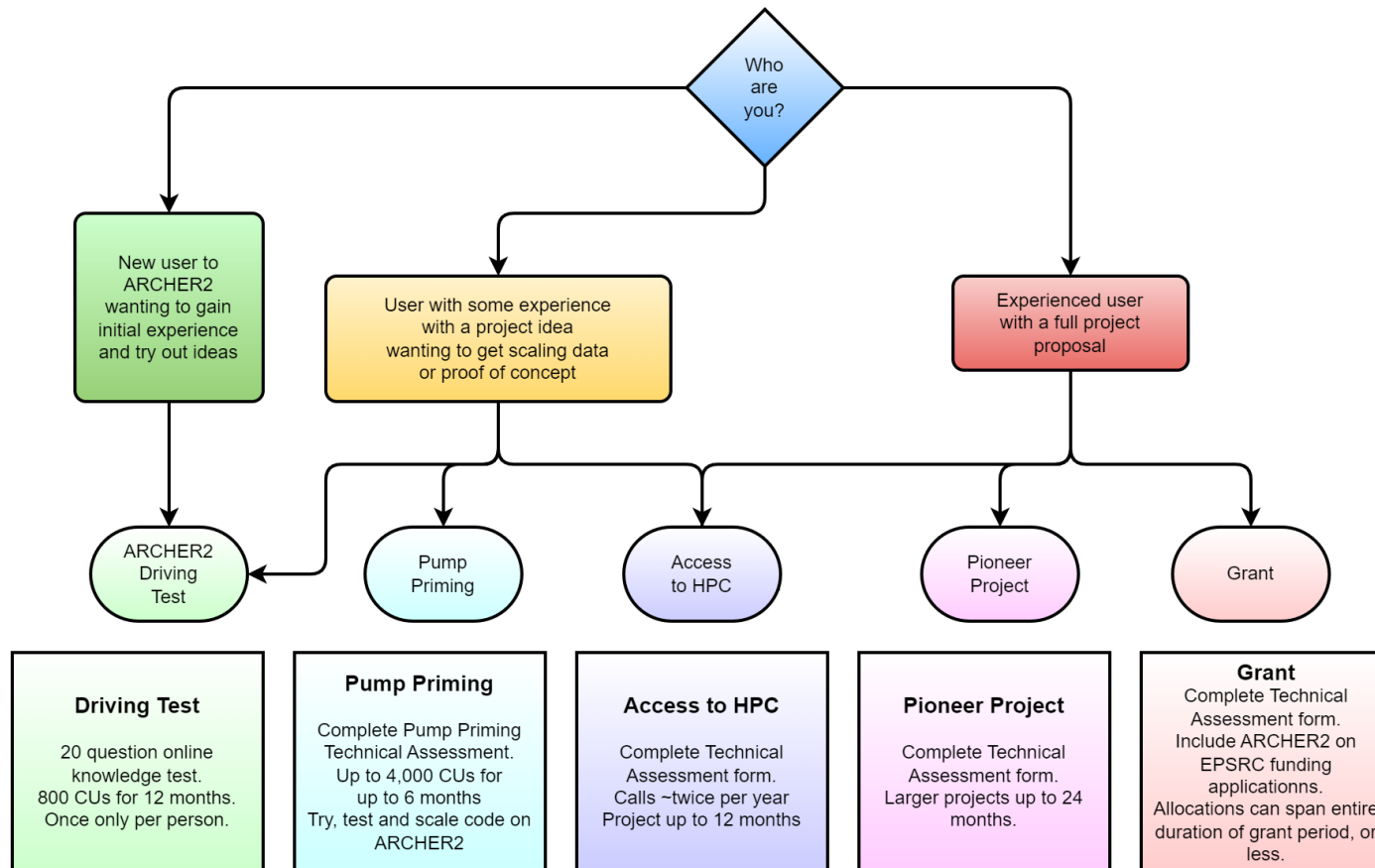
Big kit

- ARCHER2 – UK's National Supercomputing Service (Tier-1 system)
 - 5,860 nodes: 5,276 standard memory (256GiB), 584 high memory (512GiB)
 - Node: 2× AMD EPYCTM 7742, 2.25 GHz, 64-core
 - More info: <https://www.archer2.ac.uk/>
- Cirrus – EPSRC Tier-2 National HPC Facility
 - 280 compute nodes (2.1 GHz, 18-core Intel Xeon E5-2695 (Broadwell) with 256GiB mem)
 - 2 compute nodes (384GiB mem) each with 4 GPUs
 - 36 compute nodes each with 4 GPUs (NVIDIA v100 GPUs 16GiB)
 - More info: <https://www.cirrus.ac.uk/>
- EIDF (Edinburgh International Data Facility)
 - Data Science Cloud
 - More info: <https://www.ed.ac.uk/edinburgh-international-data-facility>



Access to ARCHER2

Getting access to ARCHER2



Thanks to Clair Barrass

Access to Cirrus

- On the Cirrus web: Access > Scottish Academic Access
- Possibly most pertinent - Scottish Academic Scheme
 - Trial access
 - Max ~15k CPU-h 600 GPU-h
 - Production access
 - Max 1M CPU-h 40k GPU-h
 - Have to fill in an application:
 - Only one Scottish Access application will be funded per researcher
- There are other methods of access ...



Software Sustainability Institute (SSI)

- Virtual Organisation consisting of
 - Edinburgh, Manchester, Southampton and Oxford
- Started in 2010
- Director, Prof Neil Chue Hong, based at EPCC
- Generally advocates: better software, better research
- Large number of activities
 - Started the RSE movement – now has a life of its own
 - Encouraged the adoption of the Carpentries in the UK
 - Edinburgh Carpentries (EdCarp) sister effort to CERSE
 - Runs a Fellowship Programme
 - ...
- More info: <http://www.software.ac.uk/>



Conclusions

- EPCC a great place to work for/with
- Can use it as a resource:
 - Hardware/Storage that is available
 - The people involved
- Engage with the SSI



ScotRSE

Network

Launch event :

**Wednesday 14th June 10-11
am**

Intro meeting will be an informal chat to focus on community building and get to know each other.

Proposal: Run monthly virtual meetings that “tour” around Institutions in Scotland that have RSEs. Feel free to volunteer to host an event. Aim to run one in-person event a year.

Join the mailing list:

<https://jiscmail.ac.uk/cgi-bin/wa-jisc.exe?SUBED1=SCOTRSE&A=1>

Come along to the launch event:

<https://www.eventbrite.co.uk/e/scotrse-launch-event-tickets-645289758037>

Any questions? Please get in touch: k.pringle@epcc.ed.ac.uk

Or through the Scotland channel on UKRSE Slack