



Mike Spencer

@mikerspencer@mastodon.scot

michael.spencer@smartdatafoundry.com

smartdatafoundry.com

About Smart Data Foundry

Smart Data Foundry is a **spin-out from the University of Edinburgh**'s £600m flagship Data Driven Innovation programme.

Our purpose – to **inspire financial innovation and improve people's lives** by unlocking the power of financial data.

A **not-for-profit organisation** with initial seed capital provided by the UK Government's Department for Business, Innovation & Industrial Strategy through the UK Research & Innovation Strength in Places Fund.



Smart Data Foundry Missions

Unlocking the power of financial data to help tackle the most pressing current issues – the cost of living crisis and countering climate change, and inspiring financial innovation through data

STOP THE SQUEEZE



Helping communities and small businesses with the cost of living crisis

INSPIRING FINANCIAL INNOVATION



Using data to inspire and accelerate financial innovation

COUNTERING CLIMATE CHANGE



Helping the world halt and counter Climate Change



In practice?

- Researcher collaboration
- Data hosting & impact
- Local & national government briefing
- Hackathons & startups
- Connecting groups





Paola Arce

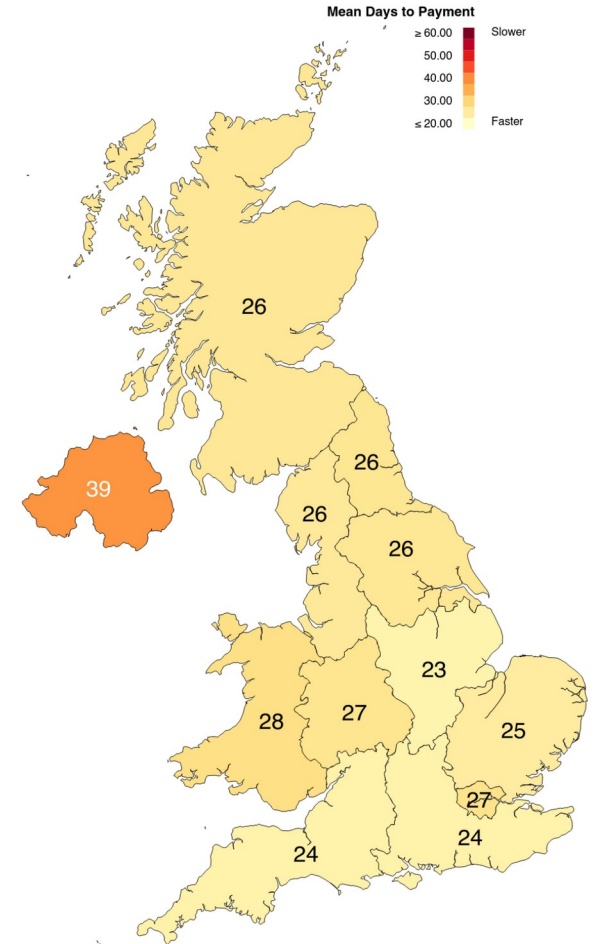
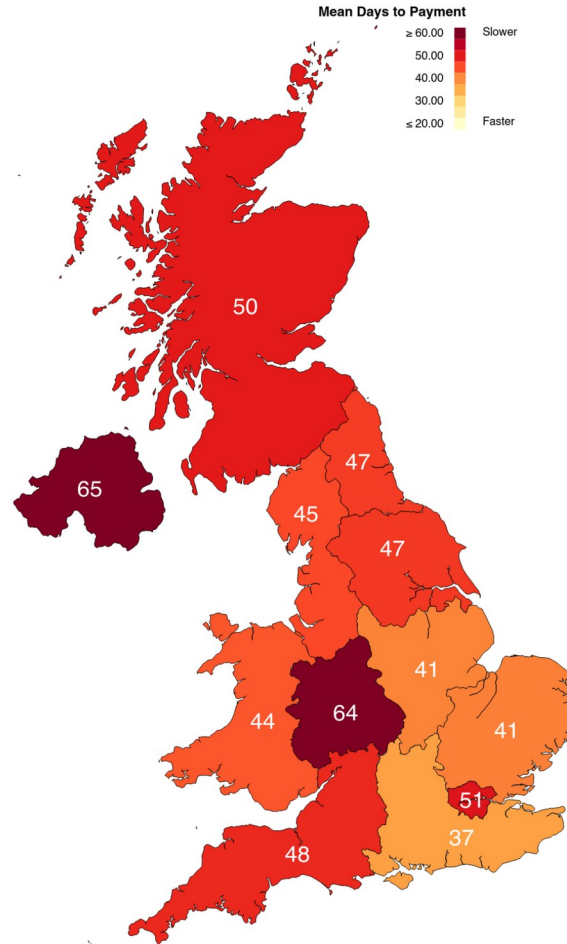
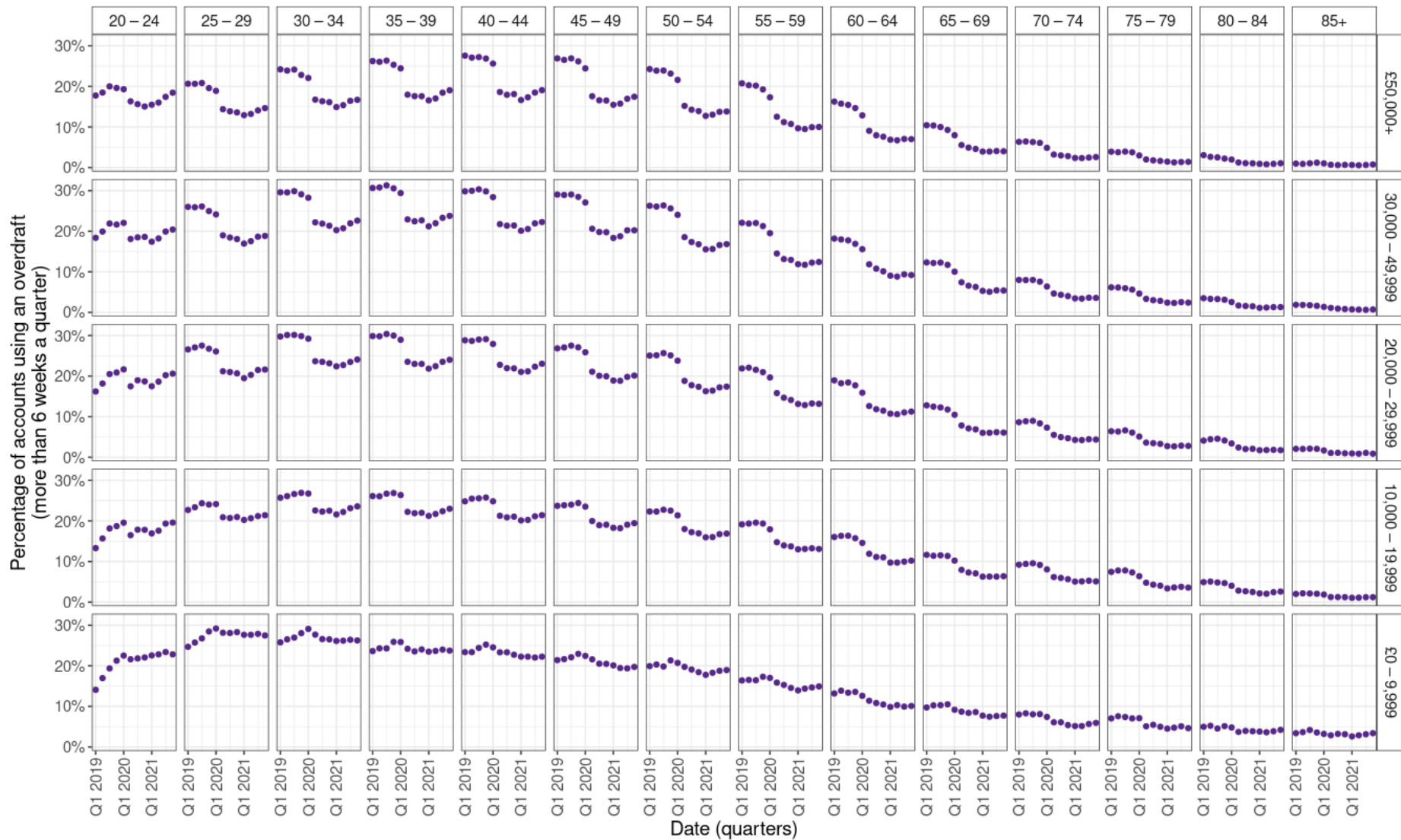


Figure 3.18: Payment Speed by Region. Left: 2010–2013 Right: 2020–2021

How did COVID-19 lockdowns change overdraft use?

Each small multiple represents a different age and income group



Explore

Data is broken down into 122 small areas (data zones) within East Renfrewshire. Each dot represents a small area.

For more information see the 'About' tab (top of page).

Financial data selection

Age range
all

Income range
all

Select a financial wellbeing indicator (dot size)
People using an overdraft

Context data selection

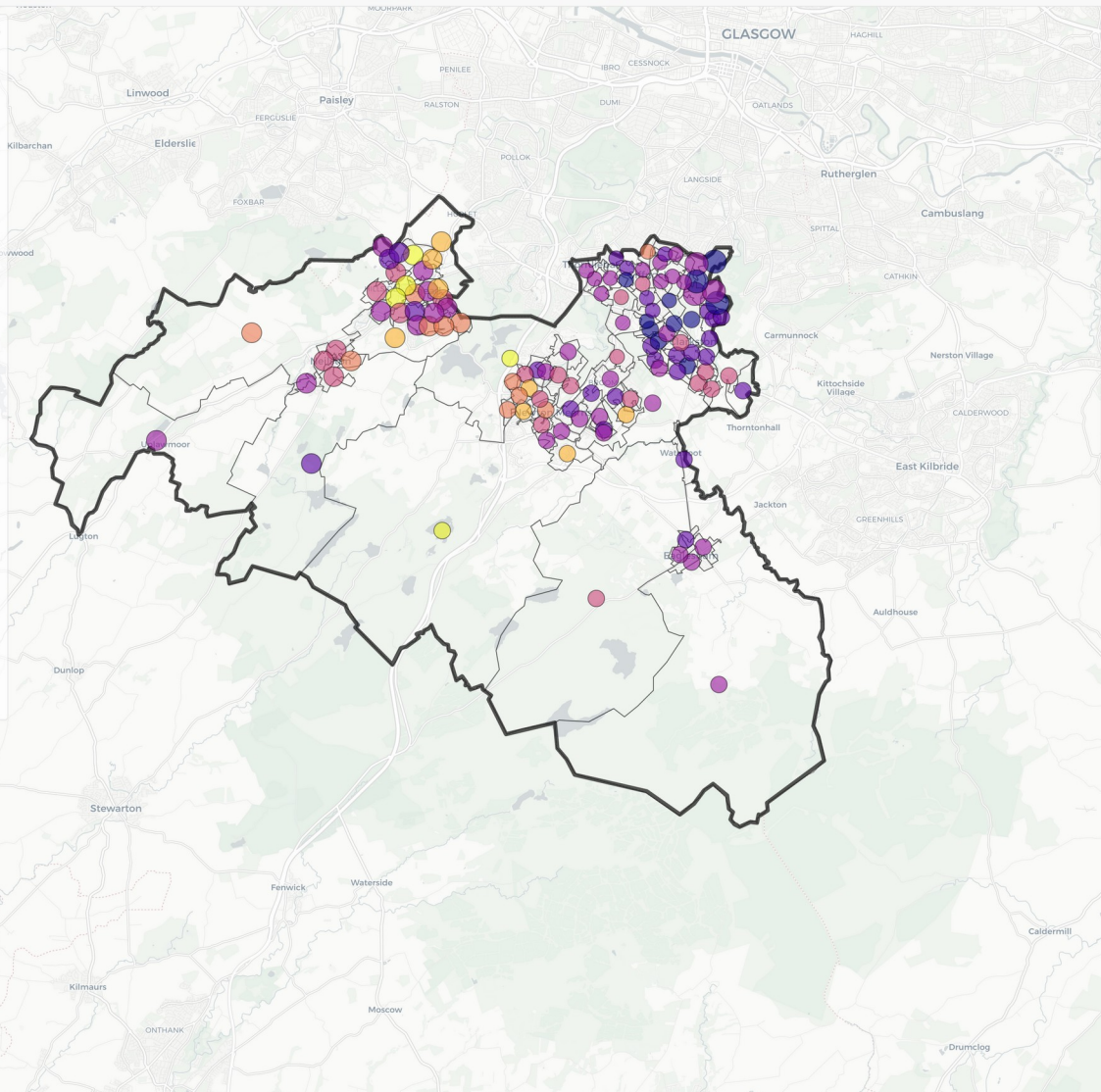
Select a metric to view how it compares with the financial wellbeing indicator (dot colour)
Homes with poor energy efficiency (%) *

* Applies to all people and homes

Select a date

Back week Forward week

2020-05-10 2023-01-22



Results

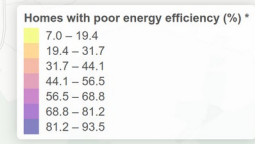
Well-being time series

Each dot is a data zone

Compare context and well-being

Each dot is a data zone

The top plot shows the visible data zones' financial well-being indicator through time. The bottom plot compares the visible data zones' financial well-being indicator against the contextual information for each data zone.





SMART DATA FOUNDRY

GET IN TOUCH

aizle ignites innovation

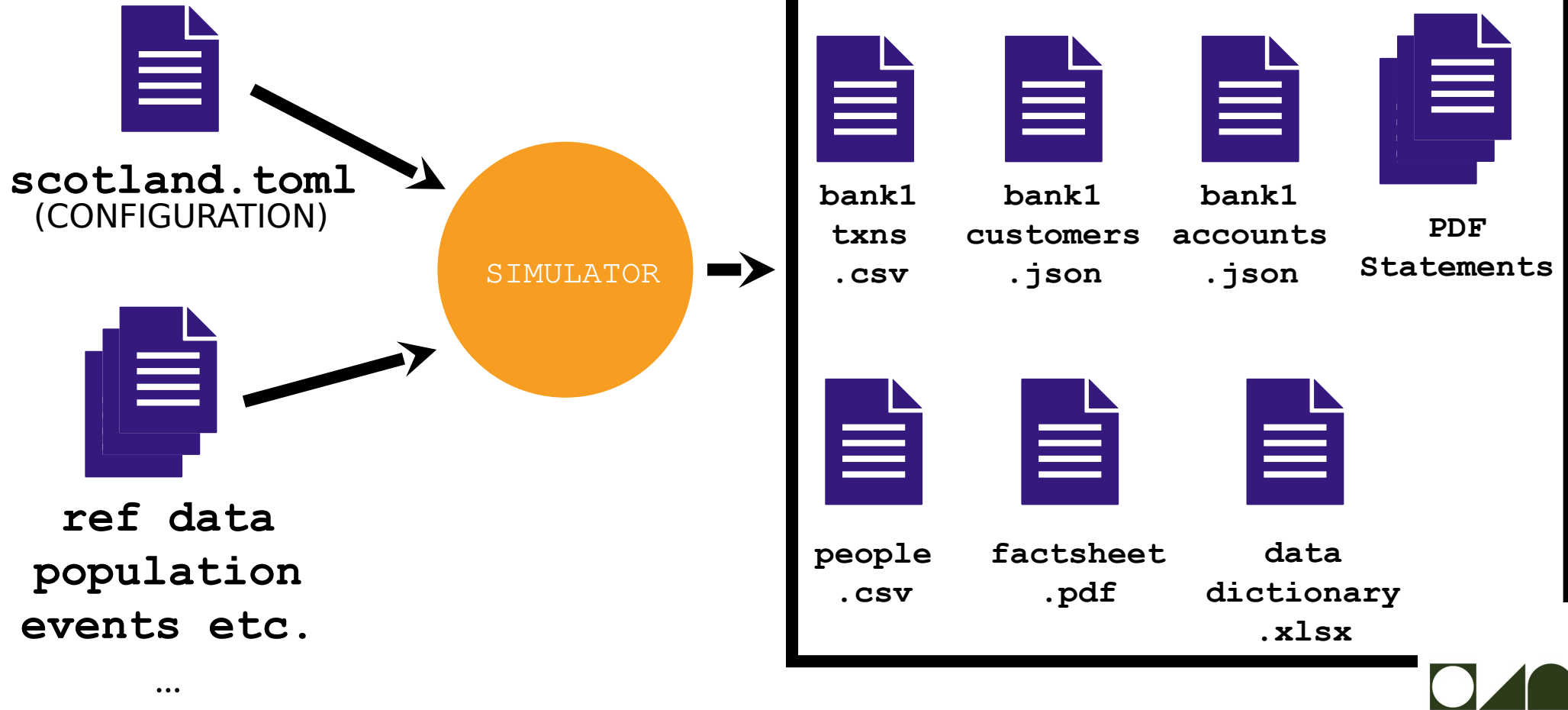
Prove ideas, build, and release new products with confidence, safety, and speed. Break through barriers to innovation with our proven synthetic datasets.

aizle is Smart Data Foundry's synthetic data engine, designed to accelerate your innovation using high utility synthetic data with no privacy issues.

GET IN TOUCH



Synthetic data generation



[About us](#)

[Firms](#)

[Markets](#)

[Consumers](#)

[Home](#) / [Events](#) / [Authorised Push Payment Fraud TechSprint](#)

Authorised Push Payment Fraud TechSprint

27-29 September 2022

We are hosting a three-day, in-person Authorised Push Payment (APP) Fraud TechSprint.

What it will involve?

This TechSprint will be a chance for the Financial Conduct Authority (FCA), Payment Systems Regulator (PSR) and industry participants to work collaboratively to better understand the technological solutions that might be available in the market, how useful data could be shared, and possible gaps and barriers.

Jobs!



smartdatafoundry.com/about#careers

Careers

If you share a passion for data and want to help improve people's lives – we'd love to hear from you!

See what roles we're looking to fill, the work you could be doing, and apply online.

① Data Engineer +

② Senior Data Scientist (Synthetic Data) +



<https://www.meetup.com/edinbr/events/292833127/>





Mike Spencer

@mikerspencer@mastodon.scot

michael.spencer@smartdatafoundry.com

smartdatafoundry.com